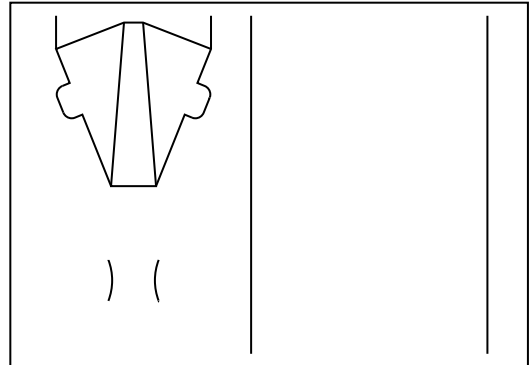




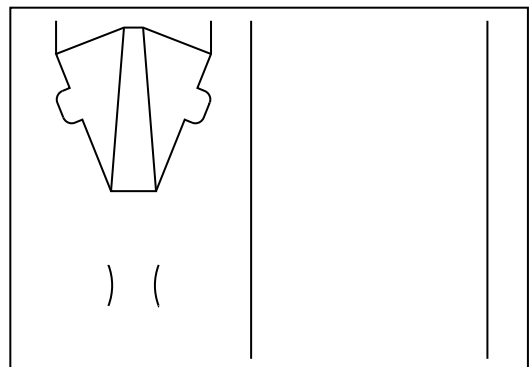
1. Contents

1 up A4 Show Card x 110 sheets



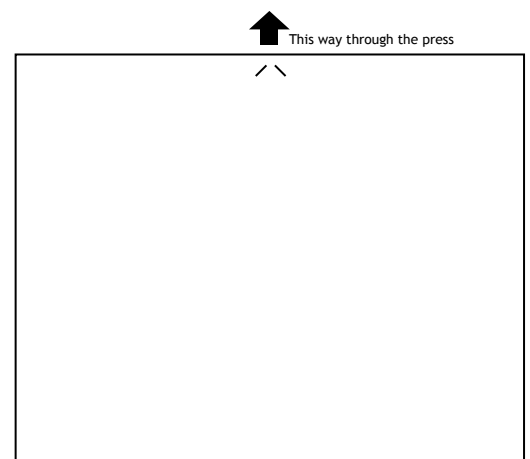
2. Artwork Guidelines

1. Allow at least 3mm bleed over all cuts and on to the glue flaps.
2. Keep glue flaps print free where possible.
3. Use the outer line of the artwork template to centre your artwork on the sheet.
4. View the artwork template for more information.



3. Printing Guidelines

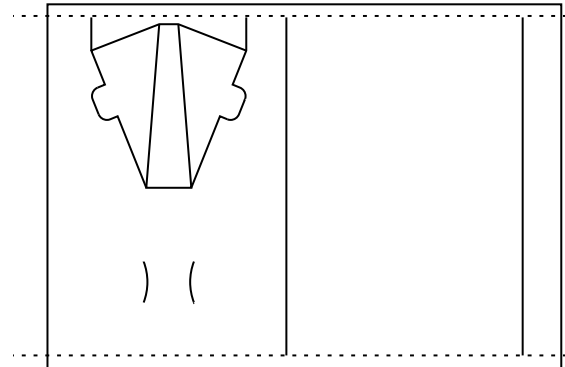
1. Print on the coated side of the stock.
2. This stock should only be used from the bypass tray and in simplex mode.
3. Maximum tray load should be 30 sheets.
4. Print with the arrow indicator on the leading edge, as shown. (Some RIPs require the image to be rotated 180 degrees)





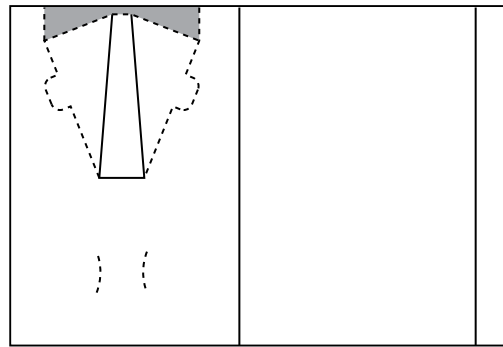
4. Trimming Guidelines

Guillotine along all trim marks as indicated by cuts on the sheet.



5. Finishing Guidelines

1. Where possible pre-fold perforated lines.
2. Tear Perforation - shown in the dotted line.
3. Tear off excess board (shown in grey).



6. Gluing Guidelines

1. Place the Show Card print side down.
2. Apply double sided tape to the areas shown in grey (Fig 1).
3. Fold the glue flap (A) (Fig. 1).
4. Fold over the back section (B) and stick in to place (Fig. 2).
5. Fold the creases to form the stand section (C) (Fig 3).
6. Fold the stand section down and place the tabs in to the slots provided (D) (Fig. 3).

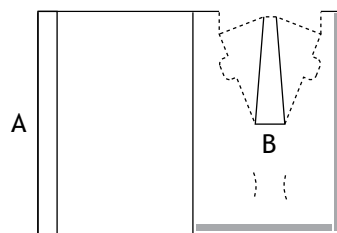


Fig. 1

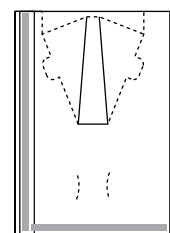


Fig. 2

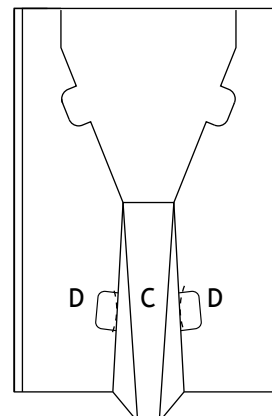


Fig. 3