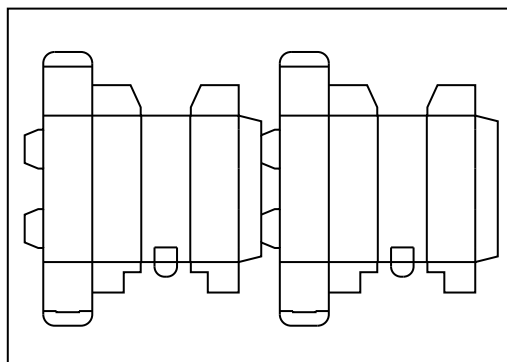




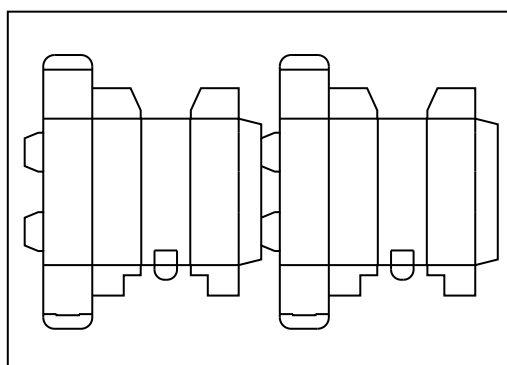
1. Contents

2 up Golf Ball Box x 110 Sheets



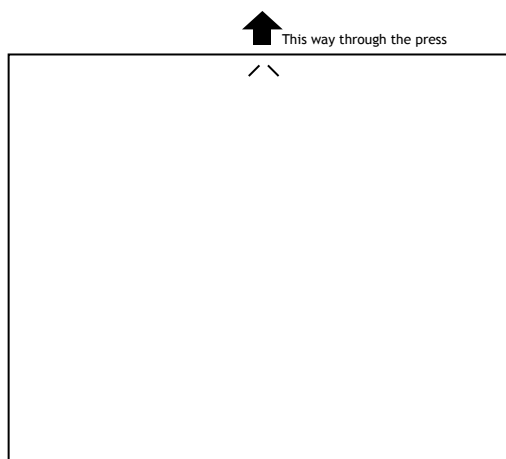
2. Artwork Guidelines

1. Allow at least 3mm bleed over all perforations.
2. Use the outer line of the artwork template to centre your artwork on the sheet.
3. View the artwork template for more information.



3. Printing Guidelines

1. Print on the coated side of the stock.
2. This stock should only be used from the bypass tray and in simplex mode.
3. Maximum tray load should be 30 sheets.
4. Print with the arrow indicator on the leading edge, as shown.





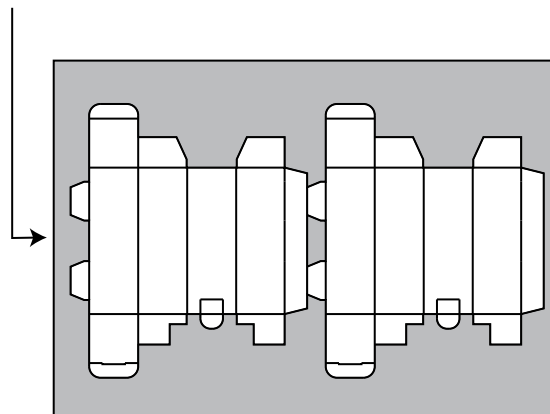
4. Finishing - Option 1

Use this option if you are finishing a very low quantity.

1. Carefully tear into the sheet, and following the perforated line tear away the waste (shown in grey).
2. Where possible pre-fold the perforated line to weaken as you are tearing.
3. Completely remove one box before tearing out the second.

Go to step 6.

Tear in here



5. Finishing - Option 2

Use this option if you are finishing multiple copies.

1. Guillotine 2mm inside the perforated edge of each box as indicated in Fig.1 & 2
2. Tear away the waste shown in grey - where possible pre-fold the perforated line to weaken as you are tearing. (Fig.3)

Guillotine lines shown in red

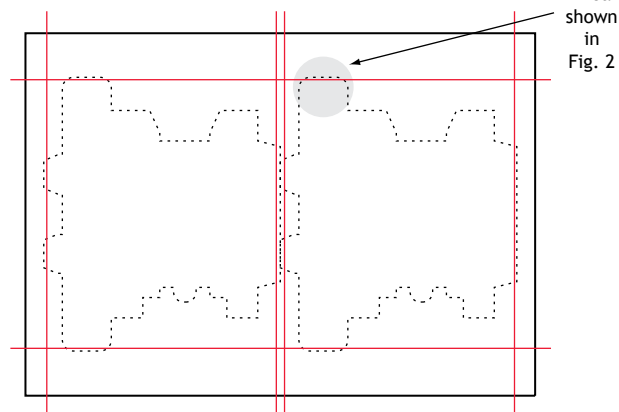


Fig. 1

Guillotine line shown in red

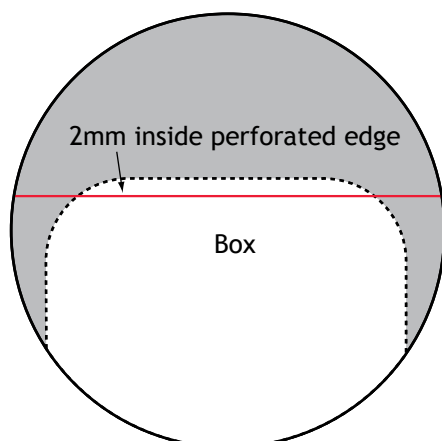


Fig. 2

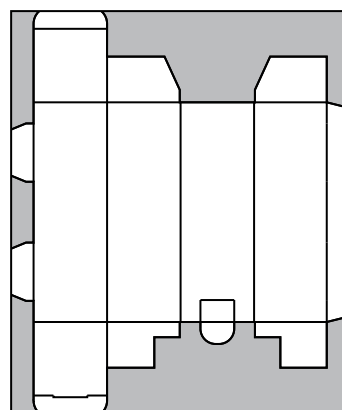


Fig. 3



6. Folding Guidelines

1. Lay the Golf Ball Box print side down on a flat surface.
2. Carefully pre-fold all creases towards you, then flatten out again.
3. Insert the tabs marked ❶ into the slots ❷ as shown in Fig. 2.
4. Fold the top and bottom tuck flaps in.
5. Push the locking tab ❸ into slot ❹.
6. The box is now complete. Fig. 3.

Fig. 1

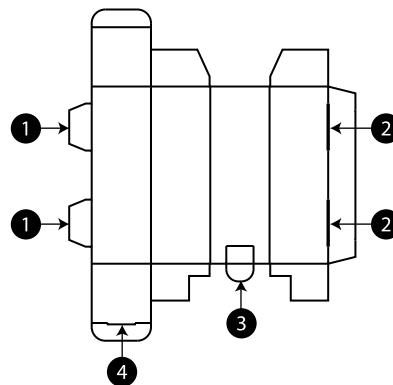


Fig. 2

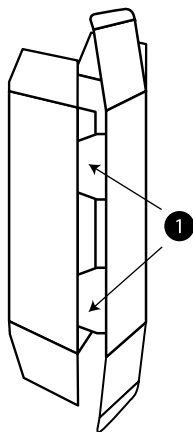


Fig. 3

